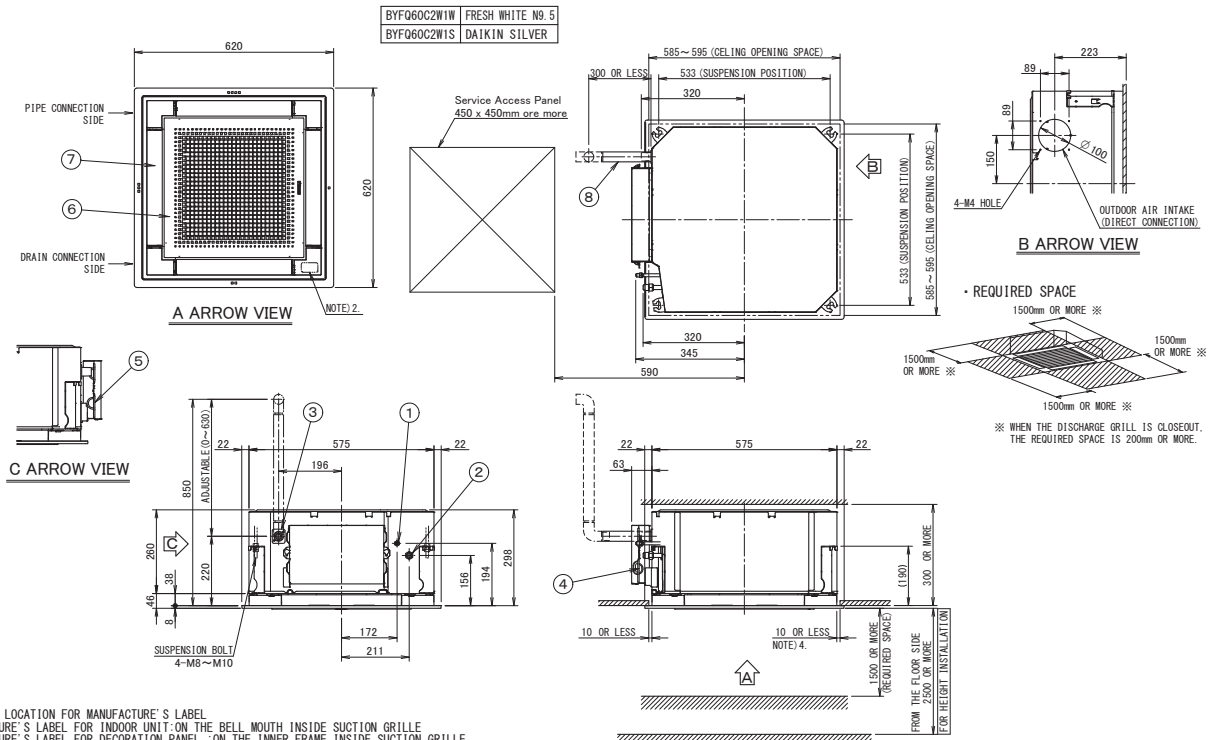


4 Dimensional drawings

4 - 1 Dimensional Drawings

FFA25-35A

• DECORATION PANEL



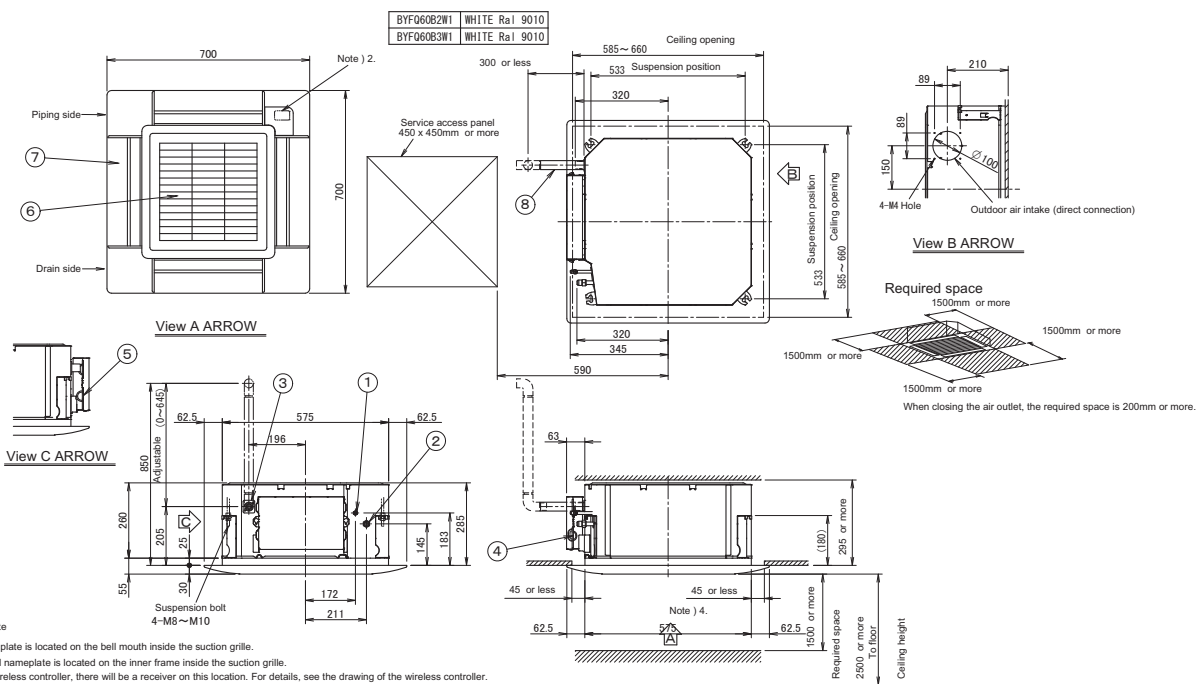
NOTE) 1. STICKING LOCATION FOR MANUFACTURE'S LABEL
MANUFACTURE'S LABEL FOR INDOOR UNIT: ON THE BELL MOUTH INSIDE SUCTION GRILLE
MANUFACTURE'S LABEL FOR DECORATION PANEL: ON THE INNER FRAME INSIDE SUCTION GRILLE
2. IN CASE OF USING WIRELESS REMOTE CONTROLLER THIS POSITION WILL BE A SIGNAL RECEIVER.
REFER TO THE DRAWING OF WIRELESS REMOTE CONTROLLER IN DETAIL.
3. WHEN THE TEMPERATURE AND HUMIDITY IN THE CEILING EXCEED 30°C AND RH 80% OR THE FRESH AIR IS INDUCED INTO THE CEILING OR THE UNIT CONTINUES 24 HOUR OPERATION, AN ADDITIONAL INSULATION (THICKNESS 10mm OR MORE OF GLASSWOOL OR POLYETHYLENE FOAM) IS REQUIRED.
4. THOUGH THE INSTALLATION IS ACCEPTABLE UP TO MAXIMUM OF 595mm SQUARE CEILING OPENING. KEEP THE CLEARANCE OF 10mm OR LESS BETWEEN THE MAIN UNIT AND THE CEILING OPENING SO THAT THE PANEL OVERLAP ALLOWANCE CAN BE ENSURED.

ITEM	PART NAME	REMARK	ITEM	PART NAME	REMARK
1	LIQUID PIPE CONNECTION	φ 6.4 (FLARE CONNECTION)	5	REMOTE CONTROL CODE AND CONTROL WIRING CONNECTION	
2	GAS PIPE CONNECTION	φ 9.5 (FLARE CONNECTION)	6	AIR DISCHARGE GRILLE	
3	DRAIN PIPE CONNECTION	VP20 (O.D. φ 25)	7	SUCTION GRILLE	
4	POWER SUPPLY CONNECTION		8	DRAIN HOSE (ACCESSORY) I.D. φ 25 (OUTLET)	

3D082433

FFA25-35A

Decoration panel



Note)
1. Location of nameplate
The indoor unit nameplate is located on the bell mouth inside the suction grille.
The decoration panel nameplate is located on the inner frame inside the suction grille.
2. When installing a wireless controller, there will be a receiver on this location. For details, see the drawing of the wireless controller.
3. If any of the following conditions are met, additional insulation (glass wool or polyethylene foam, thickness ≥ 10mm) is required:
Ambient conditions in the ceiling ≥ 30°C and 80% relative humidity.
Fresh air is induced into the ceiling. The unit operates continuously.
4. Though the installation is acceptable up to maximum 660mm square ceiling opening, keep the clearance of 45mm or less between the indoor unit and the ceiling opening, so that the panel overlap allowance can be ensured.

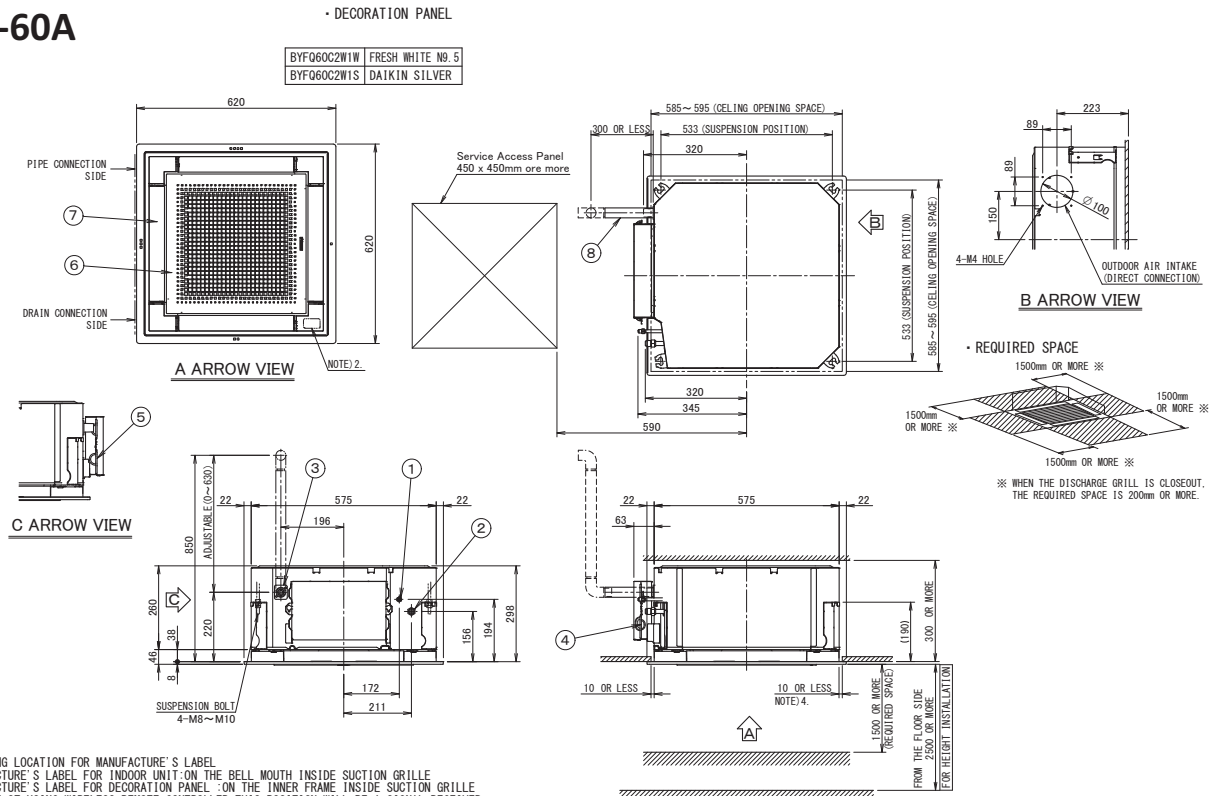
Item	Part name	Remark	Item	Part name	Remark
1	Liquid pipe connection	φ 6.4	5	Remote control wiring	
2	Gas pipe connection	φ 9.5	6	Air discharge grille	
3	Drain pipe connection	VP20 (O.D. φ 25)	7	Air suction grille	
4	Power supply		8	Drain hose Accessory	I.D. φ 25 Outlet

3D082434C

4 Dimensional drawings

4 - 1 Dimensional Drawings

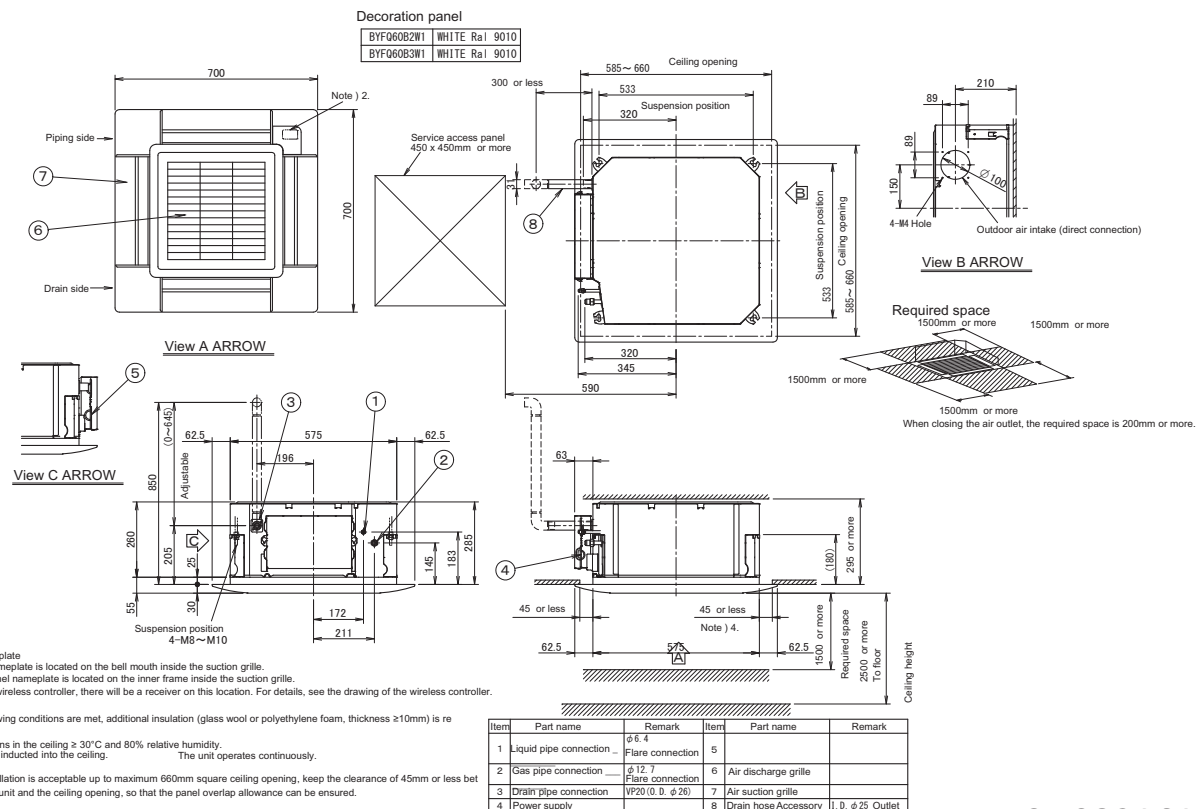
FFA50-60A



ITEM	PART NAME	REMARK	ITEM	PART NAME	REMARK
1	LIQUID PIPE CONNECTION	φ 6.4 (FLARE CONNECTION)	5	REMOTE CONTROL CODE AND CONTROL WIRING CONNECTION	
2	GAS PIPE CONNECTION	φ 12.7 (FLARE CONNECTION)	6	AIR DISCHARGE GRILLE	
3	DRAIN PIPE CONNECTION	VP20 (O. D. φ 26)	7	SUCTION GRILLE	
4	POWER SUPPLY CONNECTION		8	DRAIN HOSE (ACCESSORY)	I. D. φ 25 (OUTLET)

3D082052

FFA50-60A



Item	Part name	Remark	Item	Part name	Remark
1	Liquid pipe connection	φ 6.4 Flare connection	5		
2	Gas pipe connection	φ 12.7 Flare connection	6	Air discharge grille	
3	Drain pipe connection	VP20 (O. D. φ 26)	7	Air suction grille	
4	Power supply		8	Drain hose Accessory	I. D. φ 25 Outlet

3D082161C